

# DIR911t

Advanced Technology Instant Recall System



Eventide — the company that invented the digital voice audio logger — turned its attention to instant recall devices. We found that most units had one glaring omission. When the incoming telephone call or radio transmission is difficult to understand, the operator can play it again, but can't hear it more clearly.

## INTELLICLEAR VARIABLE SPEED CONTROL

Drawing on our expertise in professional recording and broadcasting, we changed that with the IntelliClear™ variable speed control. This feature lets the operator slow down the play back (or speed it up) without changing the pitch or degrading the sound quality. This breakthrough — made possible by advanced DSP (digital signal processing) circuitry — is nothing like the "slow" speed button offered by other units, which often makes audio harder to understand. Slowing down the replay with IntelliClear actually increases intelligibility. Operators can frequently understand speech which had been hopelessly garbled.

To make IntelliClear even more useful, we rethought the conventional rewind/ fast forward controls found on other recall devices. They're useful on a tape recorder, but on a recall unit conventional rewind/fast forward buttons overshoot the desired segment within a message which results in the operator having to "hunt and peck" awkwardly until the right segment is found. The DIR911t's rewind and fast forward work differently. The single control wheel located beside the recall button provides precise jogging backward and forward by simply turning the wheel to the left or right. It's fast and easy-to-use — ideal for high-pressure public safety operations.

## WINDOWS PC CONTROL

The MediaWorks™ client provides password-protected remote access to a DIR911t call record database, and the MediaAgent™ client provides instant recall. Multiple DIR911t instant recall recorders can be seamlessly integrated into your existing network infrastructure. MediaWorks and MediaAgent are self-installing and self-contained, scalable clients which require minimal system resources, yet provide access to the DIR911t from an unlimited number of standard Windows PC workstations with up to four simultaneous user connections.

## LARGE DISPLAY

The DIR911t's back-lit 4 line by 40 character LCD screen is much larger than those on other recall units, and shows a wider range of information. Telephone numbers can be captured from DTMF, Caller ID, or ALL data stream, and will appear on the display. All message information such as time/date, message number, message lengths, etc. are clearly shown. For operating ease, the bottom line of the LCD dynamically labels four "soft key" buttons with the proper designations for each operating mode.

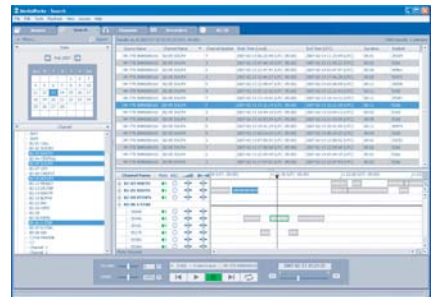
## FULLY FEATURED

The DIR911t has a full two hours to 61 hours of digital RAM storage in either two-channel or four-channel configurations. 24,000 hours of storage is available with dual RAID-1 160GB hard disks. Password security protects the system set-up parameters from being accidentally changed or erased. The DIR911t can be either a desktop or a 5.25" x 19" single or dual rack mount. The choice in instant recall units for public safety applications is clear. The DIR911t with IntelliClear variable speed control is in a class by itself!

## CHOOSE EVENTIDE

For over 40 years, Eventide has built a reputation for technological innovation and time-tested reliability. Thousands of customers world-wide have come to depend on Eventide for mission-critical operations. For more information about the DIR911t, call Eventide at 201-641-1200 or visit [WWW.EVENTIDE.COM](http://WWW.EVENTIDE.COM)

Specifications subject to change without notice or obligation.

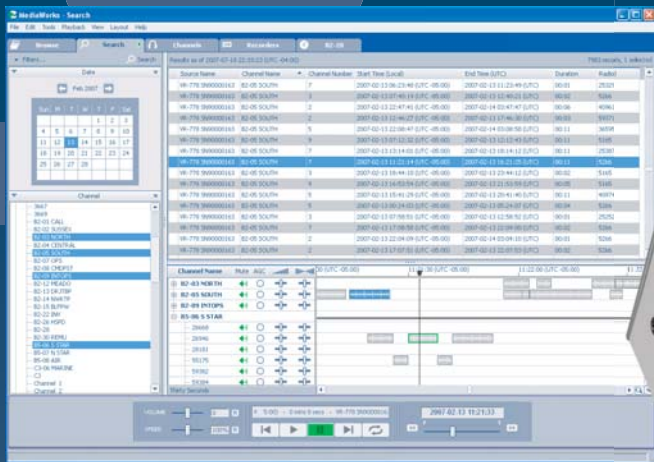


MediaWorks™ Interface

# Eventide®

Communications Division  
One Alsan Way, Little Ferry, NJ 07643, USA  
[www.eventide.com](http://www.eventide.com) [loggers@eventide.com](mailto:loggers@eventide.com)  
tel: 201.641.1200 fax: 201.641.1640

# DIR911t Advanced Technology Instant Recall System



## FEATURES

STANDALONE INSTANT RECALL RECORDER FEATURING LOCAL CONTROL

INTELLICLEAR™ AUTOMATICALLY ENHANCES INTELLIGIBILITY WITH DSP PITCH CORRECTION

AVAILABLE W/ 2 OR 4 CHANNELS

2 TO 24,000 CHANNEL HOURS OF RECORDING

COMPACT DESIGN - STANDALONE OR RACK MOUNT

NON-PROPRIETARY RECORDING APPLIANCE FEATURING EMBEDDED LINUX O/S FOR INCREASED RELIABILITY AND A MORE COST-EFFECTIVE SYSTEM

REMOTE CONTROL VIA WINDOWS PC WORKSTATIONS WITH EVENTIDE MEDIAWORKS OR MEDIAAGENT CLIENTS

EASY-TO-USE JOG FORWARD AND BACKWARD, AND SPEED CONTROL KNOB

DIAL-IN REMOTE DIAGNOSTICS

## SPECIFICATIONS

### CHANNEL CAPACITY PER UNIT

Analog – 2 or 4 channels

### REMOTE CONTROL WINDOWS CLIENTS

MediaWorks™, MediaAgent™

### ON-LINE RECORDING STORAGE

128MB, 384MB RAM storage or dual mirrored 160GB RAID-1

### SYSTEM PLATFORM

Digital non-proprietary recording & replay appliance

### OPERATING SYSTEM

Embedded Linux, running in flash memory

### ARCHIVE RECORDING

Any Eventide ATLAS series recorder via network connection

### RE-RECORD

Re-record to USB drive

### RECORD ACTIVATION

SELECTABLE PER CHANNEL  
VOX, hook detect, external

### RECORD CONNECTIVITY

Analog – phones, radio, microphones, etc.  
Digital phones – adapters available

### TELEPHONE INTERFACE

Balanced inputs with selectable beep tone, detect CID on connected lines, detect DTMF on connected lines

### CALL RECORD DATABASE

Relational database of all call records

### REMOTE PLAYBACK SEARCH PARAMETERS

Channel name/number, time/date, call duration, call direction, dialed number, caller ID number, call record filtering

## SECURITY

User ID/Password for configuration

## REMOTE DIAGNOSTICS

Via network or USB modem

## ALI DATA INTERFACE

Telephone number extracted from ALI RS-232 data stream

## SELF DIAGNOSTICS

Boot-up system test, continuous system monitoring, email alarms

## REAR PANEL

RJ-11 input jacks, aux input jacks, serial data I/O ports, USB connectors, Ethernet connector, locking 12V power connector, enable/disable battery

## TIMECODE

Resolution: 1 second  
Accuracy: 2 seconds per day  
External sync: RS-232 format 0, 1, or 2;  
NTP server or GPS receiver

## NETWORK

Ethernet 10/100Mbps, TCP/IP protocol, MediaWorks and MediaAgent Windows-based clients, up to 4 simultaneous accesses, with desktop instant recall

## ELECTRICAL

Frequency response: 200 to 3400 Hz  
Signal-to-noise ratio: greater than 50dB  
Distortion: less than 3%  
Audio input level: -35dB to +5dB with AGC  
Input impedance: 10kOhm balanced

## WEIGHT

3 lbs. (1.4 kg) excluding rack mount ears and power supply

## DIMENSIONS

Desktop - 5.5"H x 8.25"W x 6.5"D (140mm x 210mm x 165mm)  
Single rack mount - 5.25"H x 19"W x 6.5"D (134mm x 483mm x 165mm)

## POWER

12VDC/18 watts, external power supply – 115V/230V AC power supply included

Specifications subject to change without notice or obligation.

Eventide is a registered trademark; MediaWorks, MediaAgent, and IntelliClear are trademarks of Eventide Inc.

All other trademarks are the property of their respective owners.

©2011 Eventide Inc.

### AUDIO STORAGE IN CHANNEL-HOURS @ 8kHz SAMPLE RATE (16kHz sample rate is selectable)

Storage	PCM-128kbps	A-Law-64kbps	Mu-Law-64kbps	G726-32kbps	GSM 13.3kbps
128MB	2 hours	4 hours	4 hours	8 hours	20 hours
384MB	6 hours	12 hours	12 hours	25 hours	61 hours
160GB	2,500 hours	5,000 hours	5,000 hours	10,000 hours	24,000 hours

# Eventide®

Communications Division

One Alsan Way, Little Ferry, NJ 07643, USA

www.eventide.com loggers@eventide.com

tel: 201.641.1200 fax: 201.641.1640