

RUGGED.

DOCKING STATIONS AND VEHICLE MOUNTS

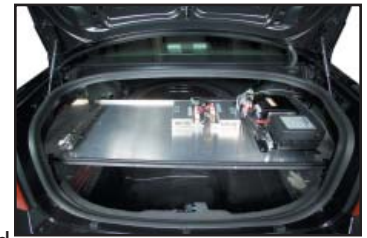
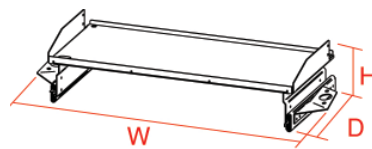


MCS Trunk Mounting Solutions- Dodge Charger Police Vehicle (2006-2008)

Description	Drilling Required	Weight	Height	Width	Depth
Complete Trunk Shelf Package (Dual Shelves, Storage Boxes and Y-strap)	Yes	83.0 lbs	NA	NA	NA

Upper Shelf Features

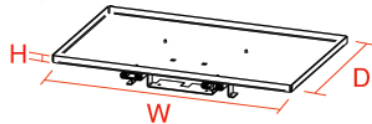
- Strong, lightweight aluminum alloy
- Rugged construction for long term durability
- Double layer bottom, (1/2" gap) so sheet metal screws can be used to mount equipment on tray without protruding through the bottom tray and injuring officers or damaging items stored in the bottom tray
- Upper tray slides on heavy-duty ball bearing slides and can latch securely in the closed and open position



Upper Trunk Tray

Lower Shelf Features

- Strong, lightweight aluminum alloy
- Rugged construction for long term durability
- Lower tray slides on heavy-duty ball bearing slides and can latch securely in the closed position
- Provides easier access and safe mounting of the spare tire
- Spare tire tie down bolt and nut are provided with tray
- Will accommodate either a full size or compact spare tire



Lower Trunk Tray

Y-Strap Features

- Heavy-duty rubber
- Tie Down Strap is permanently mounted under trunk lid
- Enables easy tie down of trunk when carrying large items such as bicycles and wheelchairs
- Strap easily stores on the underside of trunk lid when not in use



Y-Strap



Very Well Connected™

3001 Borham Ave
Stevens Point, WI 54481
Phone: 800-456-6868
Fax: 715-344-8845

Email: gamberj@gamberjohnson.com
Website: www.gamberjohnson.com

RUGGED.

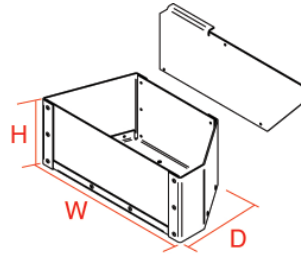
DOCKING STATIONS AND VEHICLE MOUNTS



MCS Trunk Mounting Solutions- Dodge Charger Police Vehicle (2006-2008)

Side Storage Box and Accessory Panel Features

- Boxes are constructed of lightweight, strong aluminum alloy, with high-impact clear polycarbonate front panels
- Clear front panels allow for easy, convenient viewing of box contents
- Loose objects can be placed in storage boxes to prevent them from being thrown around in trunk while vehicle is in motion
- Boxes are mounted securely to the floor of the trunk
- Side accessory panels are constructed of lightweight, strong aluminum alloy
- Panels are located directly above the side storage boxes
- Protect side trunk walls from damage potentially caused by shifting objects in the trunk
- Panels provide additional mounting surfaces for accessories and equipment



Storage Boxes



Item No. 7170-0002

 **GAMBER[®]
JOHNSON**

Very Well Connected™

3001 Borham Ave
Stevens Point, WI 54481
Phone: 800-456-6868
Fax: 715-344-8845

Email: gamberj@gamberjohnson.com
Website: www.gamberjohnson.com