

These versatile GPS portable chartplotters come ready for action, right out of the box. Forget

On land or water, you're ready to go.

time-consuming PC downloads: Both the GPSMAP® 378 and 478 arrive fully pre-loaded with the latest in nautical cartography – plus detailed City Navigator® street mapping. So, they'll go from dockside to dashboard without missing a beat. The GPSMAP® 378 features U.S. inland lake charts – with depth contours and shoreline features for thousands of lakes – while the GPSMAP® 478 is offshore-ready with BlueChart® g2 coverage of all U.S. coastal waters, including Alaska and Hawaii. Add the optional GSD™ 21 sonar, and you're ready for some serious fishing.





Navigation features

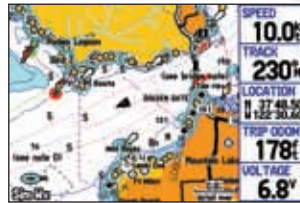
- Waypoints/icons:** 3,000 waypoints with name, symbol, depth and water symbols, 100 proximity
- Routes:** 50 reversible routes; up to 300 points each, plus MOB and TracBack® modes
- Tracks:** 10,000 point automatic track log; 15 saved tracks (up to 700 track points each) let you retrace your path in both directions
- Trip Computer:** Trip odometer, stopped time, moving average, moving time, total average, total time, maximum speed, odometer
- Alarms:** Anchor drag, arrival, off-course, proximity waypoint, weather, and clock
- Tables:** Built-in celestial tables for sun and moon by date and position
- Tides :** Tide data (U.S.A. only)
- Map datums:** More than 100 including user datum
- Position format:** Lat/Lon, UTM/UPS, Maidenhead, MGRS, Loran TDs and other grids
- DSC Support:** Yes

GPS performance (with GPS 17HVS)

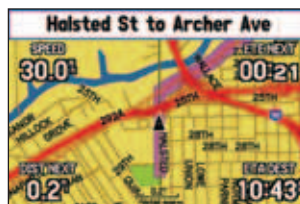
- Receiver:** WAAS enabled, 12 parallel channel GPS receiver continuously tracks and uses up to 12 satellites to compute and update your position
- Acquisition times:**
 - Warm:** Approximately 15 seconds
 - Cold:** Approximately 45 seconds
 - AutoLocate™:** Approximately 5 minutes
- Update rate:** 1/second, continuous
- GPS accuracy:**
 - Position:** < 15 meters, (49 feet) 95% typical
 - Velocity:** 0.05 meter/sec steady state
 - Interfaces:** NMEA 0183, RTCM 104 DGPS corrections and outputs
 - Antenna:** Removable quad-helix

Plotter/Moving map features

- Basemap:** Built-in basemap with automatic routing in land navigation mode
- Uploadable Maps:** Accepts preprogrammed or user-programmed Garmin data cards containing optional MapSource cartography
- Plotting scales:** 20 feet to 800 nm with dedicated push-button zoom control
- Power**
 - Source:** 11-35vDC
- Physical**
 - Size:** 5.7"H x 3.2"W x 1.9"D (142 x 80 x 41 mm)
 - Weight:** 14.2 ounces (400g) w/ battery
 - Display:** 3.8" diag., 480x320 pixel, 256-color TFT
 - Case:** Fully gasketed, high impact plastic alloy, waterproof to IEC 60529 IPX7 standards
 - Temperature range:** 5°F to 131°F (-15°C to 50°C)
 - User data storage:** Internal backup of user settings, no memory battery required



BlueChart® g2 offers more detail, richer colors and smoother integration.



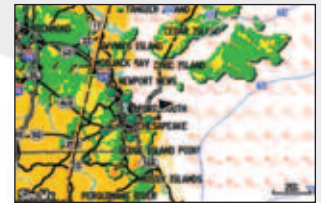
Built-in City Navigator® street mapping provides full North American coverage.

Optional XM WX Satellite Weather/Audio features

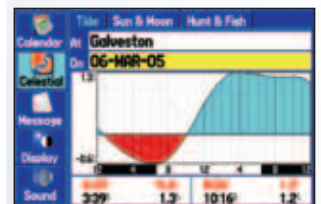
XM WX Weather*: (available with optional GXM 30 smart antenna and XM subscription) Current conditions, city forecasts, NEXRAD radar, surface air pressure, surface analysis, lightning, storm cells, hurricane track, visibility, forecast, wind speed, sea surface temp, wave period, wave direction, wave height, buoy data, marine warnings and forecasts

Accessories

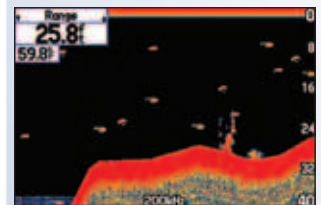
- Standard:**
 - Automotive mount
 - Adjustable marine mount
 - Universal friction mount
 - Power/data cable
 - USB interface cable
 - 12-volt power adapter with speaker
 - AC adapter
 - MapSource® Trip and Waypoint Manager
 - Owner's manual
 - Quick start guide
 - Protective cover
- Optional:**
 - GXM™ 30 smart antenna
 - GSD™ 21 remote sounder module
 - BlueChart® g2 data cards
 - Various MapSource® software
 - Various transducer options (for use with GSD 21)



With optional GXM 30 antenna, get weather data overlaid on map plus XM Satellite Radio™ options



Built-in U.S. tide prediction charts give information by date and location.



For 500-watt sounder capability, add the optional GSD 21 remote sensor.

©2006 Garmin Ltd. and its subsidiaries



Garmin International, Inc.
1200 East 151st Street
Olathe, Kansas 66062, U.S.A.
913/397.8200 fax 913/397.8282

Garmin (Europe) Ltd.
Unit 5, The Quadrangle
Abbey Park Industrial Estate
Romsey, SO51 9DL, U.K.
44/1794.519944 fax 44/1794.519222

Garmin Corporation
No. 68, Jangshu 2nd Rd.
Shijr, Taipei County, Taiwan
886/2.2642.9199 fax 886/2.2642.9099

www.garmin.com

* Requires XM subscription. Coverage provided for the United States (except Alaska and Hawaii). See GXM 30 product page on the Garmin Web site for more information.