

Amazing detail and color meet
high-sensitivity GPS performance in

Waterproof navigation with a splash of color

the GPSMAP 76Cx and 76CSx.

These mariner-friendly handhelds are
WAAS-enabled, waterproof, and they'll
even float if dropped overboard.

They're set to go the distance on land
or sea thanks to a long battery life

and 128 megabytes of microSD
card memory for loading optional

MapSource® detail: BlueChart®,
City Navigator™, TOPO, and more.

The 76CSx adds electronic compass and
barometric altimeter for extremely

accurate heading and elevation readings.

Automatic pressure trend recording even
lets you keep an eye on the weather.





Navigation features

- Waypoints/icons:** 1000 with name and graphic symbol, 10 proximity
- Routes:** 50 reversible routes with up to 250 points each, plus MOB and TracBack® modes
- Tracks:** Automatic track log; 20 saved tracks let you retrace your path in both directions
- Trip computer:** Current speed, average speed, resettable max. speed, trip timer and trip distance
- Alarms:** Anchor drag, approach and arrival, off-course, proximity waypoint, shallow water and deep water
- Tables:** Built-in celestial tables for best times to fish and hunt, sun and moon rise/set based on date and location
- Map datums:** More than 100 plus user datum
- Position format:** Lat/Lon, UTM/UPS, Maidenhead, MGRS, Loran TDs and other grids, including user grid

GPS performance

- Receiver:** High sensitivity SIRFstarIII™ GPS receiver; WAAS-enabled; continuously tracks and updates your position
- Acquisition times*:**
 - Warm: <1 sec
 - Cold: <38 sec
 - Factory reset: <45 sec
- Update rate:** 1/second, continuous
- GPS accuracy:**
 - Position: <10 meters, typical
 - Velocity: .05 meter/sec steady state
- DGPS (WAAS) accuracy:**
 - Position: <5 meters, typical
 - Velocity: .05 meter/sec steady state
- Dynamics:** 4 g's
- Protocol messages:** NMEA 0183 output protocol
- Antenna:** Built-in quad helix receiving antenna, with external antenna connection (MCX)

Moving map features

- Basemap:** (GPSMAP 76Cx & 76CSx) Built-in routable basemap (North and South America) with cities, highways, interstates, local thoroughfares and secondary roads within metro areas, interstate exit services, airports, rivers, lakes, coastlines and tide stations

Uploadable maps:

(GPSMAP 76Cx & 76CSx)

Accepts up to 1 GB (gigabyte) microSD™ data card for downloaded map detail from a variety of optional MapSource® media (extra microSD data cards optional)

Electronic compass feature

(GPSMAP 76CSx only)

Accuracy: ±2 degrees with proper calibration (typical); ±5 degrees extreme northern and southern latitudes

Resolution: 1 degree

Barometric altimeter feature

(GPSMAP 76CSx only)

Accuracy: 10 feet with proper calibration (user and/or automatic calibration)

Resolution: 1 foot

Range: -2,000 to 30,000 feet

Elevation computer: Current elevation, resettable minimum and maximum elevation, ascent/descent rate, total ascent/descent, average and maximum ascent/descent rate

Pressure: Local pressure (mbar/inches HG), 48-hour automatic pressure trend recording

Power

Source: Up to 30 hours (76Cx)
Up to 20 hours (76CSx)

Battery life: Up to 16 hours; 10 hours typical on GPSMAP 76CSx

Physical

Size: 2.7"W x 6.2"H x 1.2"D (6.9 x 15.7 x 3.1 cm)
Weight: 7.7 ounces with batteries (not included)
Display: 1.6"W x 2.2"H (4.1 x 5.6 cm)
256-color transreflective TFT display (160 x 240 pixels)

Case: Fully gasketed, high impact plastic alloy, waterproof to IEC 60529 IPX7 standards

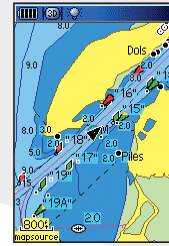
Temp. range: 5°F to 158°F (-15°C to 70°C)

User data storage: Indefinite, no memory battery required

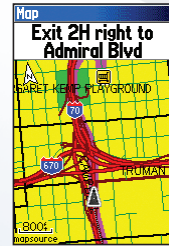
Accessories

Standard: 128 MB microSD card
PC/USB interface cable
MapSource Trip & Waypoint Manager CD
Owner's manual
Quick reference guide
Wrist strap

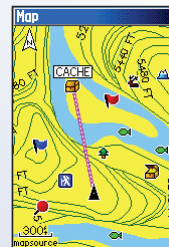
Optional: Marine mount
Carrying case
12-volt adapter cable
Power/data cable
Remote GPS antenna



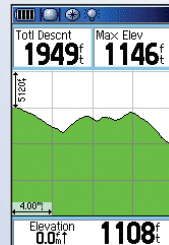
Accepts MapSource® BlueChart® data for detailed offshore cartography



Get detailed street maps plus the location of services with MapSource® City Navigator™.



MapSource TOPO data is ideal for outdoor sports such as hiking or geocaching.



The barometric altimeter feature on the GPSMAP 76CSx provides elevation profiles.

©2006 Garmin Ltd. or its subsidiaries



Garmin International Inc.
1200 East 151st Street
Olathe, Kansas 66062, U.S.A.
913/397.8200 fax 913/397.8282

Garmin (Europe) Ltd.
Unit 5, The Quadrangle
Abbey Park Industrial Estate
Romsey, SO51 9DL, U.K.
44/1794.519944 fax 44/1794.519222

Garmin Corporation
No. 68, Jangshu 2nd Rd.
Shijr, Taipei County, Taiwan
886/2.2642.9199 fax 886/2.2642.9099

www.garmin.com

Specifications are preliminary and subject to change without notice.

*On average for a stationary receiver with an open sky view.

GPSMAP 76Cx

GPS 76CSx

