

JFC-600

Echo sounder FF60



– a new colour LCD echo sounder from JRC clearly distinguishes the type of fish, realising a profitable catch

6.5” high visibility LCD screen

Dual frequency 50 & 200kHz

600W RMS transmitting power

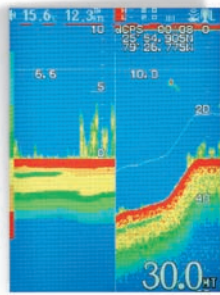
Automatic mode selection

Multiple display modes & alarms available

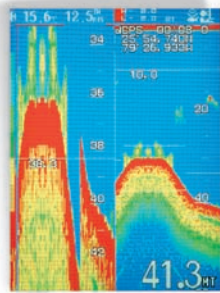
JFC-600 Echo sounder – performance features

Unique features

- The JFC-600 echo sounder continues the tradition of high performance, operating in dual frequency as standard, resulting in a highly accurate and reliable read-out.



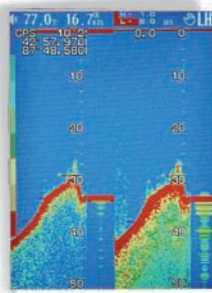
- Single frequency with bottom discrimination mode



- Single frequency with auto zoom mode

Display modes

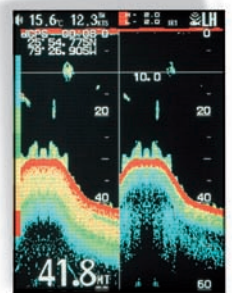
JRC's new echo sounder incorporates a 6.5" high definition colour LCD display. The innovative display modes (eleven available) allow you to select and view effortlessly the information you require. The operating status indicates gain, noise suppression and interference. The numerical data, such as speed, position, depth and temperature are conveniently displayed and reappear in each display mode.



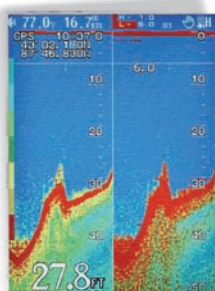
- Dual frequency with A-scope mode



- Navigation mode - graphic display



- Dual frequency mode (night mode)



- Dual frequency mixed mode

Dual frequency mixed mode

The JFC-600 includes a "dual frequency mixed mode", enabling you to overlay 2 different frequencies, a unique feature normally only available on high-end echo sounders. Generally the lower frequency is more suitable for bottom discrimination, while the high frequency is more useful for shallow water detection.

The unique "mix mode" of the JFC-600 enables you to see the differences of the two frequencies more clearly, giving you better potential for a more profitable catch.

Alarms

The JFC-600 incorporates three fish finding alarms, a 'fish, shallow and deep' alarm. In addition, the echo sounder integrates three water temperature and four navigation data alarms, and a function to turn the alarm buzzer on or off. These alarms will contribute to safer navigation and more efficient fish finding.

JFC-600 Echo sounder

– system flexibility

Flexible interfacing

The JFC-600 also known as the FF60 integrates a highly reliable interfacing field. The transducer is the heart of the operation, receiving speed, depth and temperature information, sending ultrasonic signals which determine seabed conditions and the presence of life underwater.

You also have the opportunity to connect a (D)GPS sensor and the JFC-600 has as well an NMEA 0183 input and output, enabling you to display navigation information.

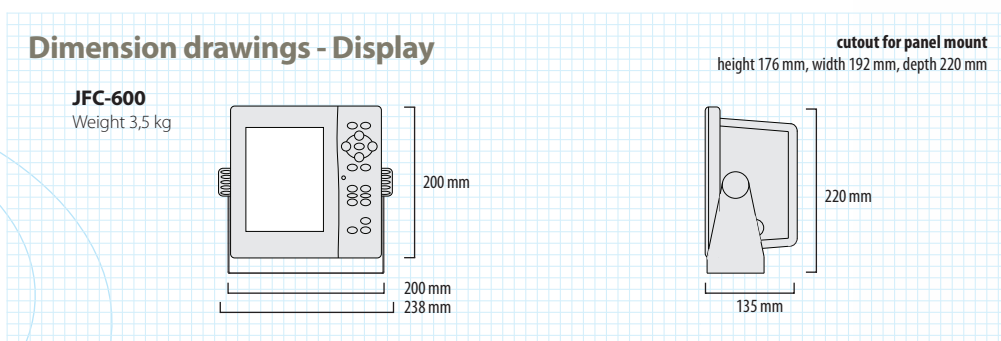
Easy operation

The compact design of JRC's echo sounder incorporates a new style of Man-Machine-Interface, providing enhanced ergonomics and user-friendliness. The large LCD screen accompanied by JRC's customary menu structure ensures logical, accurate and convenient operation.



Automatic mode selection

If situations arise where automatic scaling is essential, the JFC-600 easily adapts to the mode selection, providing an optimised view. As you navigate to your next catch and you need a certain waypoint (up to 400 possible), depth or area, the automatic mode selection will simply adapt to the mode and displays what is required at that point.



JFC-600 Echo sounder

– specifications

What's standard in the box?

1. Echo sounder
2. Spare parts
3. Power cable (length 1.5 m)
4. Sun cover
5. Manual (English)



JRC one-call™

One number to call
 With JRC you can go anywhere and if you need our support, simply call us at +81 3 3492 9201, anytime.

Model		JFC-600
Display		
Model	JFC-600	
Display	6.5" colour LCD - 640x480dot	
Presentation	8 colour gradation with 4 patterns	
Brightness control	10 levels	
Range	auto or manual: 5 to 1500m, 10 to 5000ft, 3 to 600fm	
Shift	auto or manual: 0 to 1000m, 0 to 3000ft, 0 to 600fm	
Frequency	200kHz/50kHz (dual frequency)	
Power output	600W RMS (4800W P-P)	
Gain (sensitivity)	100 steps	
Depth unit	meter, feet, fathom, SP (0.3000 to 1.9999m)	
Speed unit	knots, mile/h, km/h	
Noise suppression	level 0 to 7	
Interference rejection	off, IR1, IR2	
STC	short, mid, long	
Water temperature	0° to 40°C (32.0° to 100.0°F)	
Speed	0 to 70 knots	
Trip log	0 to 999NM (only at STD/navigation type 1 or 2)	
NMEA input	APA, APB, BWC, BWR, GGA, HDG, HDT, MTW, RMC, VTG, VHW	
NMEA output	SDBBT, SDDPT, SDMTW, SDAPB, SDBWC, GPGGGA, GPRMC	
Alarm fishing	fish, shallow, deep	
Alarm temperature	upper, lower, rate	
Alarm navigation	arrival, anchor, off course, DGPS	
Waypoints	up to 400 (10 plans, 40 waypoint per route)	
Input voltage	DC 12-24V	
Power consumption	25W (approx)	
Water resistance	IPX5	
Ambient conditions	-15°C to +55°C	
Optional items		
Triducer 200/50kHz dual freq - transom	CFT-2501TFA	
Triducer 200/50kHz dual freq - thru hull	CFT-2501HFB	
Transducer 200/50kHz dual freq - thru hull	CFT-2501HCA	
Transducer 1kW, 200/50kHz	CFT-2511	
Control connector (GPS/NMEA)	3-282-8SG-3DC (CONXALL)	
12 channel GPS receiver (with SBAS)	JLR-4340	
Power cable (extra/spare)	CFQ-5484	

JRC in Europe/Africa

Cessnalaan 40-42
 1119 NL Schiphol-Rijk
 The Netherlands

T +31 20 658 0750
 F +31 20 658 0755
 W jrceurope.com

JRC in Asia/Oceania

Fujisawa bldg. 30-16
 Ogikubo 4-chome Suginami-ku
 Tokyo 167-8540, Japan

T +81 3 6832 1721
 F +81 3 6832 1845
 W jrc.co.jp

JRC in the Americas

1011 SW Klickitat Way, 201B
 Seattle, WA 98134
 USA

T +1 206 654 5644
 F +1 206 654 7030
 W jrccamerica.com