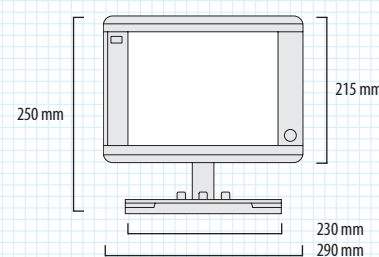


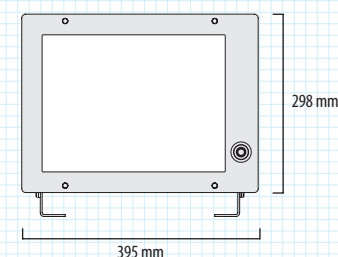
JFP-180BB Searchlight sonar – dimensions and weights

Dimension drawings - Displays¹

NWZ-146 MASS 2,8 kg



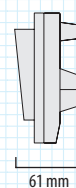
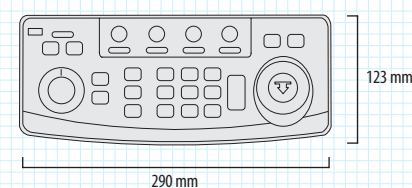
NWZ-164 MASS 3,7 kg



¹displays optional in black box configuration

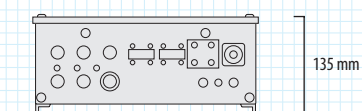
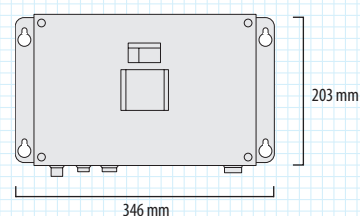
Dimension drawings - Keyboard

NCH-607E MASS 1 kg



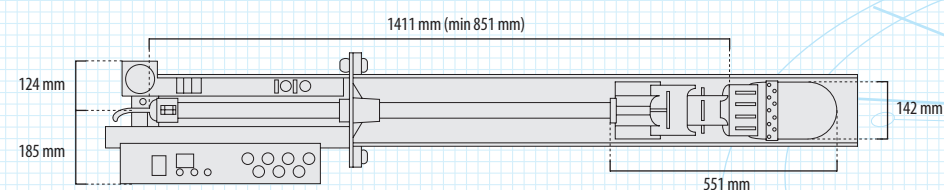
Dimension drawings - Processor

NJC-29E MASS 3,4 kg



Dimension drawings - Hull unit

NKF-900-00² MASS 44 kg



²trunk pipe is optional

JFP-180BB Searchlight sonar – specifications

Model	JFP-180	
General		
Sonar type	searchlight sonar	
Frequency	180 kHz	
Range	20 to 2000 m (8 selectable ranges: 12 to 1600 br/fm and 80 to 6000 ft)	
Sonar mode (angle)	5°, 25°, 45°, 85°, 125°, 165°, 205°, 360° (5° step) 10°, 30°, 50°, 90°, 130°, 170°, 210°, 360° (10° step)	
Bottom-scan mode (angle)	3°, 27°, 45°, 63°, 93°, 117°, 147°, 177° (3° step) 5°, 25°, 45°, 65°, 95°, 115°, 145°, 175° (5° step)	
Bearing center	5° step	
Tilt angle	-90° to +5° (1° step)	
Display modes	sonar mode, off-center mode, bottom-scan mode, sounder mode	
Data display	range, range scale, tilt angle, tilt angle diagram sector angle display, bearing angle, interference reduction ring marker (historical distance, slant distance, depth) cross cursor (bearing, historical distance, slant distance, depth) 1) compass display, 1) wake display, 1) ship's speed, latitude/longitude gain up, TVG graph, colour scale, temperature, scan display (2 types) own ship's position, VRM, depth (on detecting just below the vessel)	
Other functions	operation modes (3 types), off-center, mark, train correct target lock (in searchlight mode), temperature adjustment pulse width, colour palette, gain control, TVG control, dynamic range threshold control, output power reduction, external trigger synchronisation trigger signal output, hoist sensor lamp, hoist auto up, audio output gain, far gain, panel brightness control, day/night	
1) Inputs	NMEA0183 (GLL, GGA, VTG), trigger signal, remote controller	
1) Outputs	latitude/longitude for target, VGA, trigger signal, audio	
Power supply	DC 20-30V, 24W	
Hull unit		
Frequency	180 kHz	
Hoist stroke	200 to 400 mm	
Hoist time	10 sec (400 mm stroke, 24V power supply)	
External output	signal trigger	
Power supply	DC 10.5-30V, 110W	
Optional items		
10.4" display (LCD)	NWZ-146	
15" display (LCD)	NWZ-164	
Trunk pipe (PVC)	BRBX05030	
Trunk pipe (FRP)	BRBX05037	
External speaker (4Ω)	6USFD00010	
Remote controller (with cable)	NCH-606	
Remote controller terminal	CQD-2145 (built in NJC-29E, package order with NCH-606)	
NAV-IN terminal	CQD-2144	
Trigger input terminal	CQD-2143 (built in NJC-29E, synchronised TB for fish finder)	
NMEA output terminal	CQD-2142	
Protective cover for processor (IPX2)	BRBX05381 (desk of floor mount)	

¹⁾Optional interface may be required

• Specifications may be subject to change without notice.

For further information, contact:

JRC Japan Radio Co., Ltd.
Since 1915 URL <http://www.jrc.co.jp/eng/>

Main Office: Nittochi Nishi-Shinjuku bldg.
10-1, Nishi-Shinjuku 6-chome
Shinjuku-ku, Tokyo 160-8328, Japan
Telephone: +81-3-3348-4099
Facsimile: +81-3-3348-4139

Overseas Branches: Seattle, Amsterdam, Athens
Liaison Offices: Taipei, Manila, Jakarta, Singapore,
Hanoi, Shanghai, Hamburg, New York

27EM ISO9001, ISO14001 Certified

© 2008.2 2008.2 CAT.No.X00-000 (No.000-0-0) X Printed in Japan

JFP-180BB Searchlight sonar

JRC



– a new 180 kHz searchlight sonar that illuminates the underwater scene with highly reliable scans

10.4" or 15" high visibility LCD screen (option)
Continues searching when adjusting tilt angle
Intuitive menu structure
Multiple display modes available
Flexible black box configuration

JFP-180BB Searchlight sonar – performance features

Unique features

- The JFP-180BB new and compactly designed searchlight sonar integrates multiple display modes, which will allow you to control your presentation at your own convenience.

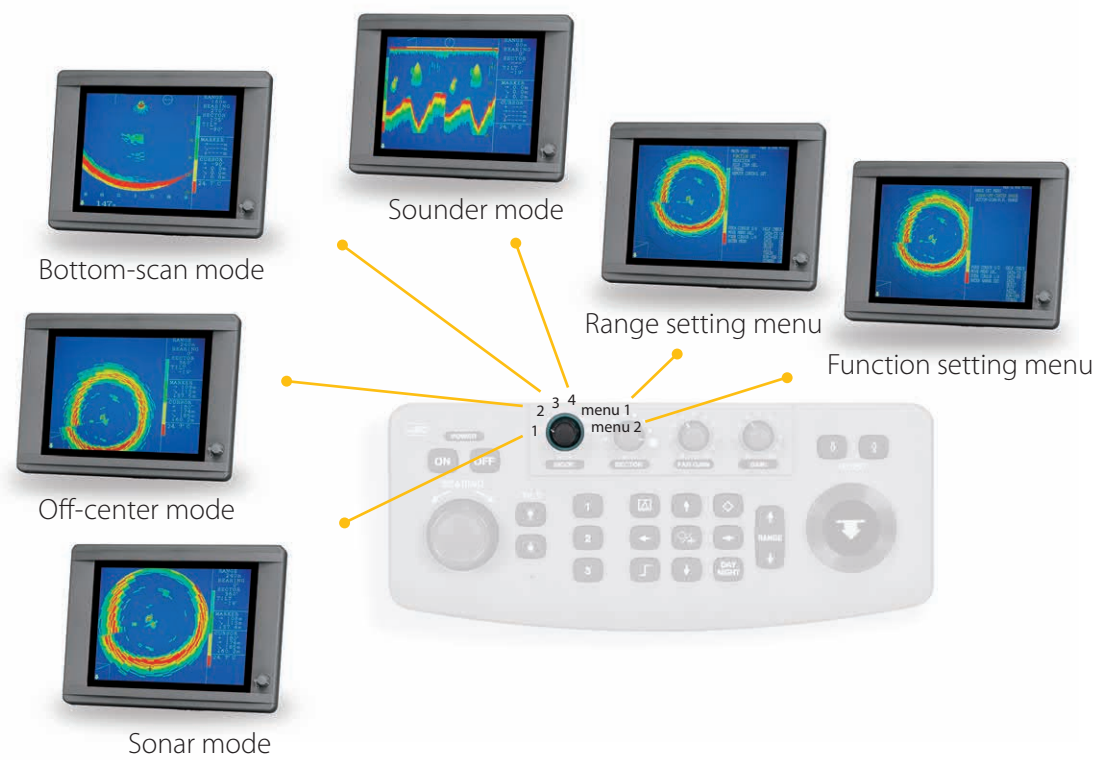
Suiting your moment in time

JRC's new JFP-180BB searchlight sonar is black box configured as standard, allowing you to select a preferred display size suiting your vessel. JRC's displays uniformly incorporate a high brightness LCD display, available in 10.4- or 15-inch, ideal for installations on (relative) small commercial fishing vessels.

It also integrates a dedicated one-touch day/night key, which provides suitable brightness to the display images, supporting particular time and scene operations.

Multiple display modes

The sonar integrates multiple display modes, facilitating a valuable working environment. The new JRC searchlight sonar illuminates the underwater scene with a beam of sonic energy, rotating through 360 degrees.



The JFP-180BB provides a range of display modes to suit the search task. You can select a detailed display image at your convenience.

JFP-180BB Searchlight sonar – developed for maximum ease of use

Simple and precise operation

The new searchlight sonar allows you to carry out all operations simply by using the keyboard.

The layout has a full complement of keys, including direct tilting, hoist control, and special one-touch menu keys to access different scanning modes on screen. This makes it easy to navigate through all common used tasks.



The logic of the controls and excellent on-screen menus will greatly shorten most users' learning period.

Colour 'enrichment' palette



Fish and underwater targets are displayed in eight colours, including white, on a high brightness LCD display. The searchlight sonar integrates a colour palette, allowing you to change the ratio of red, green and blue by choosing a different tone. The strength of the colours can be freely set in 15 steps. You can also set the tones according to the target fish species, generating the most optimised on-screen view at your convenience.

JRC StarNetwork™

JRC has been providing sales and support of products since 1915. Today, JRC offers comprehensive assistance through its organisation, in partnership with a worldwide StarNetwork™ of over 270 fully trained and qualified partners and agents, assisting you 24 hours a day, 7 days a week and 365 days a year.



JFP-180BB Searchlight sonar – system flexibility

Continues searching when adjusting tilt angle

The newly developed JFP-180BB give the user a feature not previously found on this class of sonar. The searchlight sonar will not stop searching when adjusting the tilt angle. This is a very useful tool for enhancing your efficiency of fishing operations and safety of navigation.

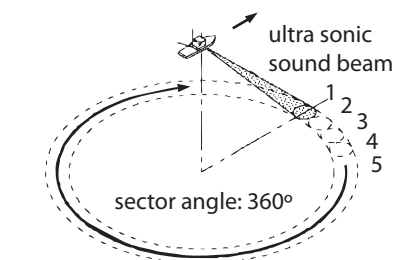
Flexible black box configuration

The searchlight sonar consists of a compact processor, dedicated keyboard and high performance transducer, allowing for a flexible installation approach in confined spaces. JRC also provides an optional 10.4- and 15-inch high brightness monitor, and for those who prefer to specify their own display, the JFP-180BB allows you to choose what type and size of display to connect to the unit. You can choose between CRT and LCD display, as long as it supports VGA.



Interfacing

The new JFP-180BB incorporates a highly reliable industry standard interfacing field. Connect additional navigation equipment, such as GPS, which provides on-screen the exact location of this vessel. It also shows the track line of the vessels' bow wake (wave that relatively spreads out in the rear of the vessel), initially saved every 2 seconds.

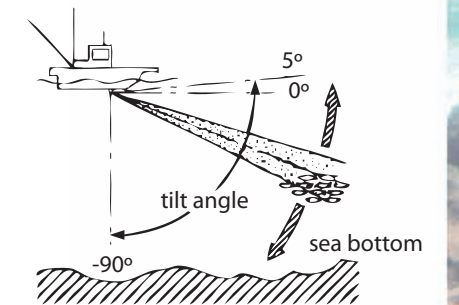


Searching all around

The horizontal scan (sonar mode) can search through a full 360 degree or search a selection of up to 16 different sectors using a 5- or 10-degree beam width.

Optimum tilting

The centre of the beam can be set in 1 degree increments from 5 degrees from the horizontal, to 90 degrees from the sea surface. The transducers ultra sonic beam sweeps a specific sector and bearing. When pointing straight down, the beam will give a high definition picture of the sea floor. As the beam moves from the perpendicular to the horizontal, bottom definition reduces and fish detection improves.



What's standard in the box?

1. Display (excl. in BB config)
2. Processor
3. Keyboard
4. Hull unit
5. Soundome unit
6. Joint pipe
7. Spare parts
8. Cables
9. Manuals (English)

Which cables?

Display to processor (excl. in BB config)	5 m
Display to power supply (excl. in BB config)	5 m
Processor to power supply	3 m
Keyboard to processor	5 m
Hull unit to processor (signal)	15 m
Hull unit to processor (hoist)	15 m
Hull unit to power supply	5 m