

Model No. **BB-HCM580A** (AC Adaptor Type)
BB-HCM581A (PoE Ready)

Before Reading this Document

This manual is written for both the BB-HCM580A (AC Adaptor Type) and the BB-HCM581A (PoE Ready). Available features and operations vary slightly depending on the model. You can confirm the model no. of your camera by checking the model no. printed on the front of the camera. **Make sure you have read the Important Information document and followed the instructions in the Installation Guide for connecting your camera.**

- Before following the instructions in this document:
 - Confirm that your camera is turned on and connected to your router.
 - Temporarily disable any firewall or antivirus software on your PC.
 - Close your web browser.
- Screen shots in this document depict camera screens when using the BB-HCM581A. The screens displayed by the BB-HCM580A may differ slightly.
- Screen shots shown in this document are for reference only and may vary from what is displayed on your PC depending on the camera model, network settings, etc.

Abbreviations

- UPnP is the abbreviation for "Universal Plug and Play".
- The Network Camera is referred to as "the camera" in this document.
- The Setup CD-ROM is referred to as "the CD-ROM" in this document.

Trademarks

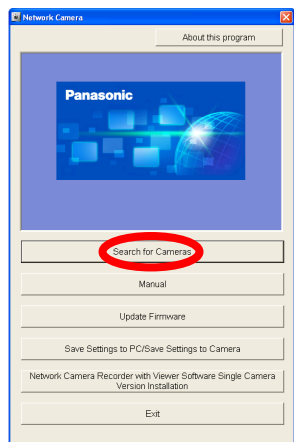
- Adobe and Reader are either registered trademarks or trademarks of Adobe Systems Incorporated in the United States and/or other countries.
- Microsoft, Windows, Windows Vista, Windows Server, ActiveX, and Internet Explorer are either registered trademarks or trademarks of Microsoft Corporation in the United States and/or other countries.
- Screen shots reprinted with permission from Microsoft Corporation.
- All other trademarks identified herein are the property of their respective owners.
- This software is based in part on the work of the Independent JPEG Group.

1. Insert the included CD-ROM into your PC.

- The Setup Program starts. If the program does not start, double-click Setup.exe found on the CD-ROM.

2. Click [Search for Cameras].

- The program searches for cameras connected to your network.



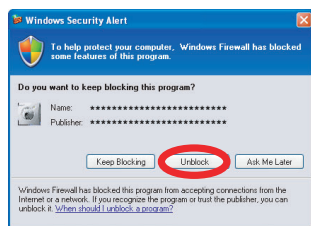
- **[About this program]:** Displays the program's version information.
- **[Search for Cameras]:** Displays a list of cameras connected to your network.
- **[Manual]:** Allows you to view the included documentation. PDF versions of the printed documentation are included on the CD-ROM; Adobe® Reader® is required to view them.
- **[Update Firmware]:** Allows you to use the Setup Program to update the camera's firmware (built-in software).
- **[Save Settings to PC/Save Settings to Camera]:** Allows you to save a backup of all camera settings on your PC, or restore all settings in the camera using a backup file saved on your PC.
- **[Network Camera Recorder with Viewer Software Single Camera Version Installation]:** Installs the [Network Camera Recorder with Viewer Software Single Camera Version] software. (See "Installing the Network Camera Recorder with Viewer Software Single Camera Version" on page 2.)
- **[Exit]:** Closes the screen and exits the Setup Program.

If [Windows cannot open this file] is displayed after clicking [Manual]

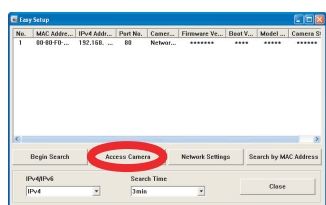
[Select the program from a list]→[OK]→Check [Always use the selected program to open this kind of file]→[Browse]→Browse to [C:\WINDOWS\system32\mshta.exe]→[Open]→[OK]

3. When the Windows Security Alert is displayed, click [Unblock].

- If the dialog is not displayed, continue to the next step.



4. Select the camera you want to configure, and click [Access Camera].

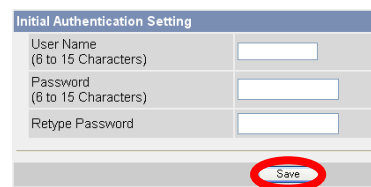


To assign all network settings to the camera manually, or to assign an IP address using the DHCP feature of your router, click [Network Settings], then select [Specify an IP Address] or [DHCP] and enter the appropriate settings.

- If you have more than one camera, you can distinguish cameras by model number, printed on the front of the camera, or by MAC address (see "Camera Diagram" on page 2 of the Installation Guide to find your camera's MAC address label).
- If more than 20 minutes have passed since the selected camera was turned on, you cannot configure the camera. Turn off the camera, then turn it on again. This restriction does not apply to cameras which have not been configured yet or have been reset to their factory default settings.

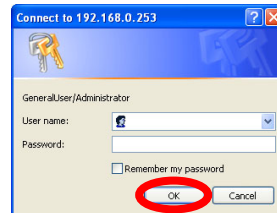
5. Enter the desired user name and password, then click [Save].

- Do not forget the user name and password you set here, otherwise you will need to reset the camera and configure it again.

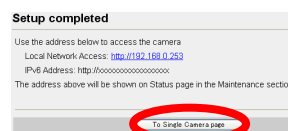


If you are using a French, German, Italian, Spanish, Russian, Simplified Chinese, or Japanese language OS, this screen will be displayed in the corresponding language, and all subsequent camera screens will be displayed in that language.

6. Enter the user name and password, then click [OK].



7. When [Setup completed] is displayed, click [To Single Camera page].



The camera's IP address is displayed. This is the IP address you must enter in your web browser to access the camera. Do not forget this address.

- If the following ActiveX® Controls dialog is displayed, click [Install ActiveX Control...].

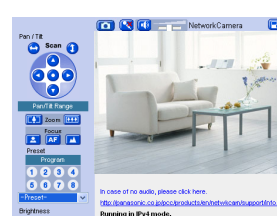


- When the following Security Warning is displayed, click [Install].



This will install the viewer program (ActiveX Controls) needed to display camera images properly. Viewer programs must be installed to view MPEG-4 images, MJPEG images, and to use audio features.

- The camera image is displayed.



Congratulations! You have successfully set up the camera and can now view camera images.

