



it's what's on your network that counts



Panasonic ideas for life



i-Pro intelligent and professional IP video security solutions make your network better. Our expanding i-Pro Series combines Panasonic performance and quality with the latest advancements in IP technology. And with a growing line of IP cameras, network video recorders, video servers, and management software, you can design the system configuration that best meets your needs today - with an eye on expansion tomorrow. Now that's security you can take into the future. Panasonic i-Pro. It's what's on your network that counts.

i-Pro: intelligent and professional IP/networking solutions



Ruggedized Megapixel Day/Night Fixed Dome Network Camera

WV-NF302

NEW!

- 1280 x 960 megapixel high quality image for superior identification
- MPEG-4/JPEG digital signal output at VGA with up to 30 ips
- Progressive output for smooth images of moving objects and superb color reproduction
- PoE for cost-efficient cabling and easy installation
- Adaptive Black Stretch enhances visibility of dark areas
- Focus assist function achieves best focus position on screen
- Alarm-activated dynamic compression for better identification and bandwidth optimization
- SD memory card slot for manual, alarm or network failure recording



Megapixel Day/Night Network Camera

WV-NP304

NEW!

- 1280 x 960 megapixel high quality image for superior identification
- MPEG-4/JPEG digital signal output at VGA with up to 30 ips
- Progressive output for smooth images of moving objects and superb color reproduction
- PoE for cost-efficient cabling and easy installation
- Adaptive Black Stretch enhances visibility of dark areas
- Focus assist function achieves best focus position on screen
- Alarm-activated dynamic compression for better identification and bandwidth optimization
- SD memory card slot for manual, alarm or network failure recording



For real megapixel image quality and variable angle view, use optional 1.3 megapixel lens



Super Dynamic III Weather Proof Day/Night Dome Network Camera

WV-NW964

- Super Dynamic III (SDIII) technology delivers 128x wider dynamic range and Intelligent Technology features for exceptional images in virtually any lighting condition
- Progressive output for smooth images of moving objects and superb color reproduction
- 360° endless panning (0.065°/s – 400°/s)
- 0.5 lux min. illumination color, 0.04 lux B/W
- Auto tracking, Auto Image Stabilization
- Digital slip ring ensures picture quality since no DA/AD conversion
- Dual MPEG-4/JPEG streaming
- 30x optical zoom, 10x electronic (300x total)
- SD memory card slot for manual, alarm or network failure recording



Super Dynamic III Day/Night Dome Network Camera

WV-NS954

- Super Dynamic III (SDIII) technology delivers 128x wider dynamic range and Intelligent Technology features for exceptional images in virtually any lighting condition
- Progressive output for smooth images of moving objects and superb color reproduction
- 360° endless panning (0.065°/s – 400°/s)
- 0.5 lux minimum illumination color, 0.04 lux B/W
- 30x optical zoom, 10x electronic (300x total)
- SD memory card slot for manual, alarm or network failure recording
- Dual MPEG-4 and JPEG streaming
- Auto tracking, Auto Image Stabilization
- Digital slip ring ensures picture quality since no DA/AD conversion



Super Dynamic III Day/Night Dome Network Camera

WV-NS202A

- Super Dynamic III (SDIII) technology delivers 128x wider dynamic range and Intelligent Technology features for exceptional images in virtually any lighting condition
- Progressive output for smooth images of moving objects and superb color reproduction
- 22x optical zoom for accurate capture of objects from long distances
- PoE for cost-efficient cabling and easy installation
- 0.7 lux min. illumination color, 0.5 lux B/W
- Drag and zoom feature
- SD memory card slot for manual, alarm or network failure recording



Super Dynamic III Vandal-Proof Day/Night Fixed Dome Network Camera

WV-NW484S

- Super Dynamic III (SDIII) technology delivers 128x wider dynamic range and Intelligent Technology features for exceptional images in virtually any lighting condition
- Progressive output for smooth images of moving objects and superb color reproduction
- Vandal Auto Back Focus automatically adjusts camera focus when switching from color to B/W
- PoE for cost-efficient cabling and easy installation
- High sensitivity: 0.6 lux color, 0.08 lux B/W (w/clear dome)
- SD memory card slot for manual, alarm or network failure recording



Color Fixed Mini Dome Network Camera

WV-NF284

- Dual MPEG-4 and JPEG selectable output for simultaneous monitoring and recording of images
- Progressive scan CCD for smooth images of moving objects and superb color reproduction
- PoE for cost-efficient cabling and easy installation
- 30 fps - VGA in MPEG-4/JPEG mode
- Video Motion Detection transmits an alarm signal when moving objects enter monitored area
- SD memory card slot for manual, alarm or network failure recording
- Built-in microphone (G.726)



Megapixel Day/Night Color Network Camera

WV-NP1004*

- 1.25 million pixels (1280 x 960) CCD for smooth reproduction of moving objects
- Dual MPEG-4/JPEG selectable output
- Day/night switching for 24-hour surveillance
- SD memory card slot for manual, alarm or network failure recording
- Auto Back Focus for perfect focus in color or B/W mode



Color Network Camera

WV-NP244*

- Dual MPEG-4/JPEG selectable output
- 30 fps - VGA in MPEG-4 or JPEG mode
- Power over Ethernet: IEEE 802.3af
- 1/3" Progressive scan CCD
- Video Motion Detection
- SD memory card slot for manual, alarm or network failure recording
- One way audio (G.726)
- ALC



Network and Analog Unitized PTZ Dome Camera

WV-NS324

- Network and analog connectivity
- 360° endless panning
- High sensitivity: 1.0 lux in color (0.25 lux @ 4x resolution)
- Over 480 lines of resolution
- 10x optical zoom / 5x digital zoom
- Video Motion Detection
- 16 presets
- 24V AC
- Built-in web server



Super Dynamic II Day/Night Network Camera

WV-NP472*

- Network and analog connectivity
- 480 lines color, 570 lines B/W
- Wide dynamic range for contrasted lighting
- Day/Night switching for 24-hour surveillance
- Built-in digital motion detector
- Built-in web server
- 12V DC

* lens optional



Network Video Recorder (NVR)

WJ-ND300A

- High speed throughput
 - 3 dedicated ports (camera /client /setup)
- Auto IP setup for Panasonic cameras
- Accepts JPEG, MPEG-4 & analog cameras (w/encoder)
- MPEG-4 rate control recording - full rate "I" frame recording only for efficient recording and viewing
- Data stream control: live/recording
- Base unit capacity 2TB; expandable to 14TB
- Live viewing and PTZ camera control
- Download pictures to PC
- Accepts other camera manufacturer's input
- Raid 5 board (optional)
- For mid-large sized applications



Network Video Recorder

WJ-ND400 **NEW!**

- MPEG-4/JPEG multi-format recording
- Up to 64 network cameras can be connected and recorded simultaneously
- Up to 9 hot-plug HDDs can be installed
- 8 recording programs and up to 6x schedule per day
- Free camera license for cost-effective camera expandability
- Browser interface can be used to view content; no extra software required
- High reliability through embedded Real-Time OS



Removable Disk Network Video Recorder (NVR)

WJ-ND200

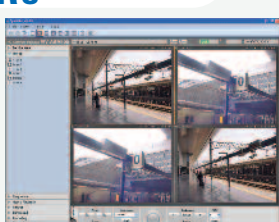
- Removable 2.5" HDD for easy archiving and management
- Multi-format: JPEG and MPEG-4
- High reliability through embedded Real-Time OS
- Mirroring recording function with 2 HDD's
- Audio recording and playback
- SD memory card slot for manual, alarm or network failure recording
- Up to 2 ruggedized HDD's (160GB each)
- Direct video playback through a PC with optional HDD cradle (WJ-HDC20)
- For small-mid sized applications



i-Pro Management Software Solution for Panasonic NVR's & DVR's

WV-ASM100

- Control up to 100 Panasonic recorders
- Live viewing and alarm message pop-up
- MPEG-4 live performance
- Control of Panasonic PTZ cameras
- Multiple displays (operation, live, maps)
- Joystick controller capability with optional WV-CU950
- Status/health check for recorders
- Independent camera/encoder support



i-Pro Monitoring Software

WV-ASM10

- Multi-screen software decoder designed for control rooms
- Up to 16 recorders and 256 network cameras can be registered
- MPEG-4 and JPEG formats
- Live display and sequence play by 1/4/6/9/16 screen
- Open interface for external control
- Supports i-Pro cameras, recorders, encoders
- Camera title display - 16 characters



Multi-Channel High-Definition Video Decoder

WJ-GXD400 **NEW!**

- HDMI video interface
- VGA image displayed at 30ips/sec
- MPEG-4 live performance
- Registers up to 256 cameras
- Supports multicast/unicast for efficient network usage
- High-speed network interface
- High reliability through embedded real-time OS



4 Channel MPEG-4/JPEG Video Encoder with Video Analytics

WJ-NT314

- 4 channel MPEG-4/JPEG encoder with 2 channel advanced analytics
- Intruder detection
- Object detection (removed or left behind)
- Frame and track display on browser
- Automatic 3D object size calculation
- SD memory card slot for manual, alarm or network failure recording
- Up to 8 detected objects can be identified (per channel)
- Progressive output



Encoder/Decoder

WJ-GXE900 / WJ-GXD900

- Video and audio encoder/decoder
- Low delay of 150ms
- Monitor images at any location, any distance
- Simultaneous monitoring of 4 channels
- Flexible architecture
- Multicast transmission ensures efficient use of network
- Provides broadcast-quality images



i-Pro 4 Channel MPEG-4/JPEG Video Encoder

WJ-NT304

- Allows for smooth migration to IP system utilizing existing analog cameras
- Transmit VGA (640 x 480) images in either MPEG-4 or JPEG, up to 30 fps
- MPEG-4/JPEG dual output
- 4 channel input with 2 way audio
- Panasonic camera control over coax
- SD memory card slot for manual, alarm or network failure recording



Technology in Detail Guide



22x optical zoom Equates to 3.8mm to 83mm focal length lens with 10x digital zoom, providing 220x total zoom capability.



30x optical zoom Equates to 3.8mm to 114mm focal length lens with 10x digital zoom, providing 300x total zoom capability.



Auto Back Focus Optimizes the back focus automatically for clear, sharp images. The CCD position automatically adjusts when changing from color to B/W mode, eliminating any focus shift problems.



Day/Night Camera will automatically or manually switch from color mode (daytime) to B/W mode (nighttime) to achieve optimal viewing.



Hybrid Product with both analog and IP/networking connectivity.



IP66 "Ingress Protection 66" - the 66 refers to ingress protection for dust, and water from heavy seas, or water projected in powerful jets shall not enter the enclosure in harmful quantities.



MEGA Pixel A resolution of one million pixels.



PoE Power over Ethernet (IEEE802.3af).



Ready Tuff Vandal-resistant or vandal-proof camera designation.



MPEG-4/JPEG

Selectable compression technologies. MPEG-4 is a Wavelet-based file that delivers professional quality audio and video streams over a wide range of bandwidths. Defined by the Moving Pictures Expert Group (MPEG) and was standardized in October 1998. JPEG is the standard for compressing still images. It produces high quality images but typically requires more space for storage. Defined by the Joint Photographic Experts Group.



SDII

Exclusive Panasonic technology offers 64 times greater dynamic range producing exceptional images even in high contrast lighting, compared to a conventional camera.



SDIII

Offers numerous camera performance attributes including: 128x dynamic range; pixel-based digital contrast correction; auto image stabilizer; scene change detection; 30X optical zoom (300X electronically); adaptive digital noise reduction; 540 lines of color resolution; and extreme low light sensitivity in color (0.5 lux) and B/W (0.06 lux). Check individual products for exact specifications.



SD Card

"Secure Digital" - A small memory card featuring a high data transfer rate and encryption capability to protect content.



Up The Coax

Supports Up-the-Coax (coaxial cable) signal transmission and control.

Resources

Order Placement

To place, modify or check an order, or make shipping changes.
Toll-Free Phone: 1.877.867.0623
Toll-Free Fax: 1.877.665.5647

Sales Support

For all inquiries regarding dealer applications, Business Link accounts/resets, return requests and general questions.
Toll-Free Phone: 1.877.733.3689 (option 3)
Fax: 1.201.348.7372

Technical Support

For technical support on installation, programming and configuration.
Toll-Free Phone: 1.800.528.6747
Toll-Free Fax: 1.888.809.6198
psditech@us.panasonic.com



Training

Visit www.panasonic.com/P-Tech



Panasonic Solution Developer Network program (PSDN)

PSDN is a cooperative program designed to offer participants open development tools, technical information, and protocols to encourage and accelerate the development of integrated and inter-operable system solutions. Visit www.psdn.info



i-Pro Certified Reseller Program

Panasonic Security Systems offers the i-Pro Certified Reseller (IPCR) Program to train highly capable channel resellers who can design, implement, and support newly emerging opportunities in the IP/IT security space. Key benefits include:

- Free training through P-Tech
- Easy availability of Panasonic's leading i-Pro IP product lineup
- Subsidized demo equipment
- Resource-rich sales and marketing materials
- And more...



More detailed information about the certification process and training requirements are available at www.panasonic.com/P-Tech.

Government Sales

GSA Contract Number
For All Security Products: GS-07F-0698N
Toll-Free Phone: 1.877.733.3689 (option 4)

Headquarters

Panasonic Security Systems
A division of Panasonic System Solutions Company
Three Panasonic Way, 2H-2
Secaucus, NJ 07094
Toll-Free Phone: 1.877.733.3689

Visit www.panasonic.com/security for the latest product information

© Copyright 2008 Panasonic Corporation of America. All rights reserved. Specifications are subject to change without notice. Panasonic cannot be responsible for network performance and/or other manufacturers' products that reside on the network. These products may be subject to export control regulations.