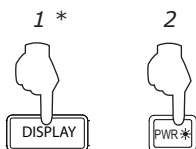


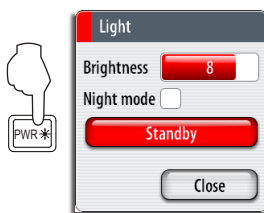
Key	Description
1	MOB. Man Overboard. A press positions a MOB waypoint at the vessel's current position
2	Display Under Command LEDs. Indicates which display the OP40 is controlling
3	DISPLAY key. Short press: Change which display the OP40 is controlling. Long 5 second press: enter OP40 configuration and system startup
4	PLOT/MARK key. A short press activates the Plot menu, a long press positions a waypoint at the vessel position
5	Zoom keys for radar, echosounder and chart panels
6	GOTO/VESSEL key. A short press activates the Goto menu, a long press centers the chart to vessel position
7	✓ key – Activates/confirms current selection
8	Rotary knob. Used to maneuver in the menu system, and for context specific operation
9	X (Exit) key. Used to close dialogs, and to return to previous menu level. Removes the cursor from the screen on radar, sonar and chart panels
10	Cursor keypad used to move the cursor on the display, and to maneuver in the menu system
11	WIN key, used on multiple panels pages. A short press toggles between the panels, a long press expands active panel to a full page panel and back again
12	MENU key. A single press displays the context menu for active panel/overlay/operation. Pressing the key twice displays the Settings menu
13	Direct Access Keys (DAK). Provide direct access to a page. Repeated presses of each DAK cycles through several different pages that relate to the DAK
14	PWR: Short press used to turn on active processor/display Short press during operation used to bring up the power control and brightness dialog (and Radar STBY if applicable)
15	STBY AUTO: Autopilot Auto steer / Stand-By
16	Alpha numeric keypad used for entering numbers and text in dialog boxes

## ▶ Turning the unit on/off

### Power ON



### Standby



### Power OFF

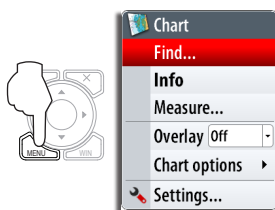


\* Multiple processor systems only

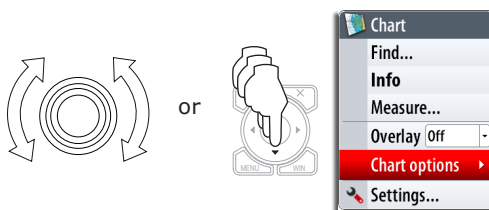
NOTE: There is 5 second delay before an image will appear on the screen.

## ▶ Operating the menu system

### Display menu



### Select menu item



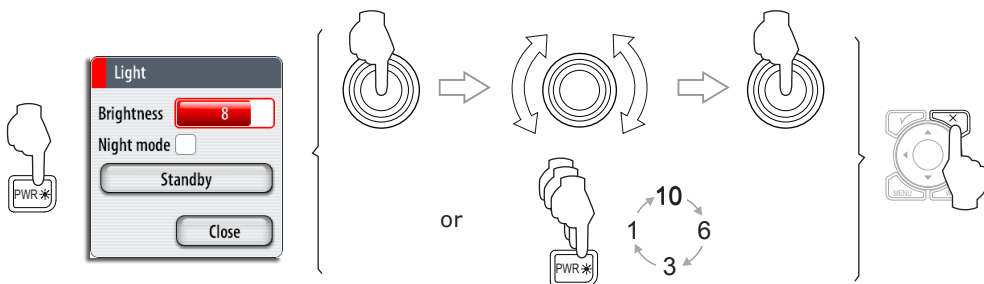
### Exit menu



### Toggle selection



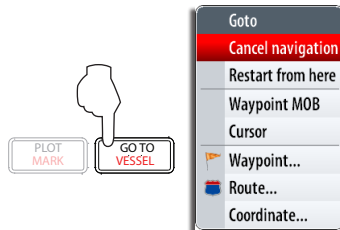
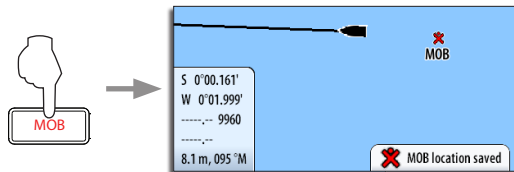
## ▶ Adjusting backlight



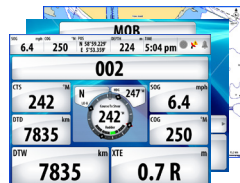
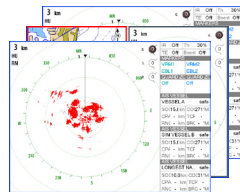
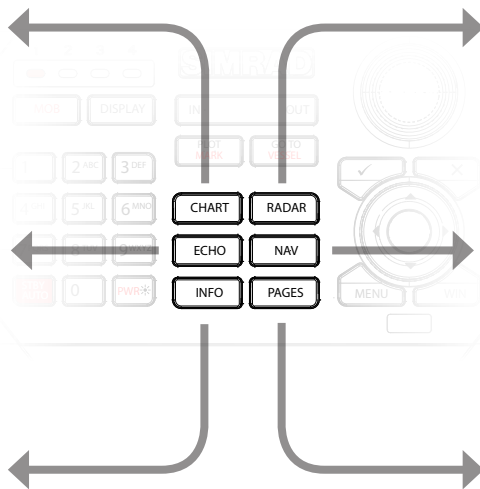
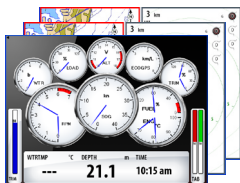
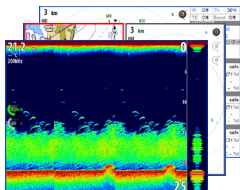
# ▶ Man Over Board (MOB)

*Activating the MOB function*

*Cancelling the MOB function*

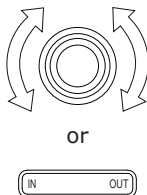
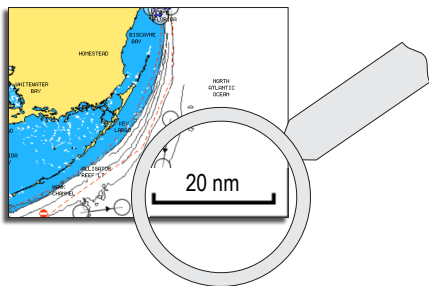


# ▶ Selecting Applications

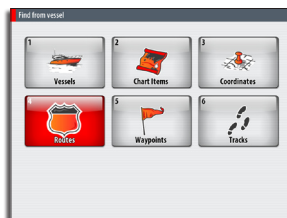
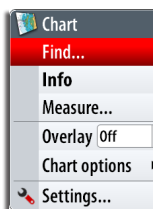
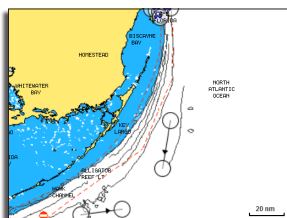


## ► Using charts

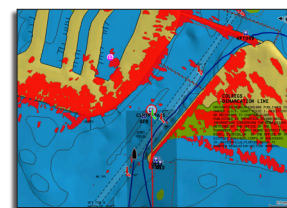
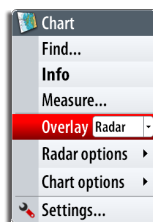
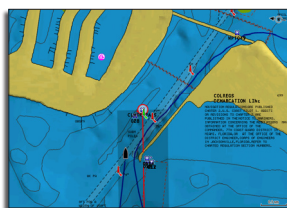
### Changing chart range



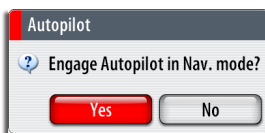
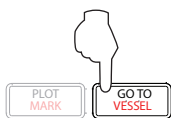
### Finding chart objects



### Displaying radar overlay on chart pages



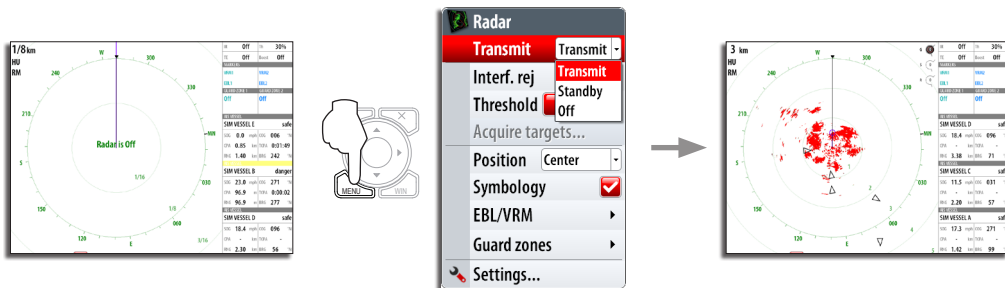
## ► Navigating



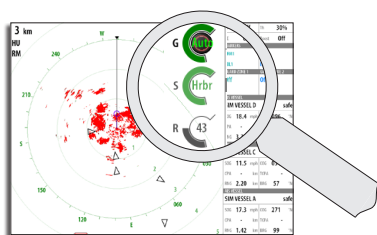
**NOTE:**  
This prompt will appear only with optional Simrad autopilot integration.

## ► Using the radar

### Turning radar transmitting On/Off



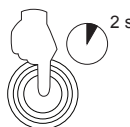
### Adjusting radar image



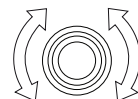
### Select



### Select preset



### Adjust

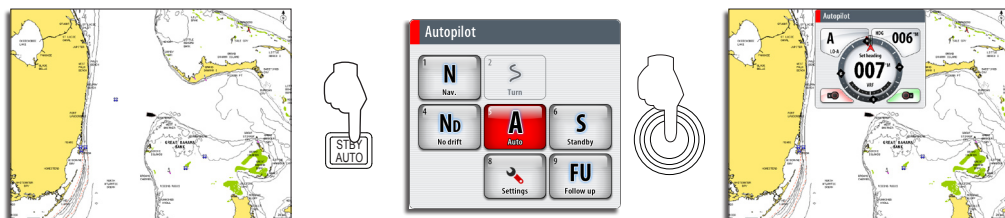


“Auto” - Manual

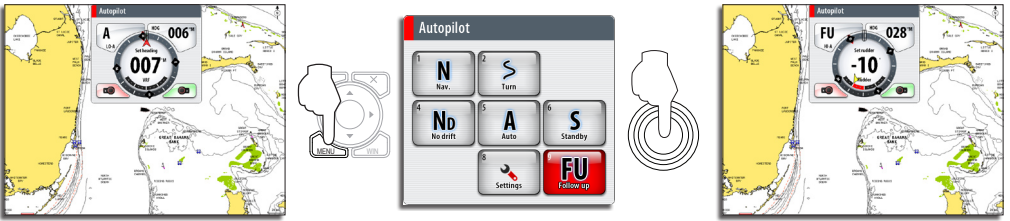
“Hrbr” - “Ofsh”

## ► Using the Autopilot

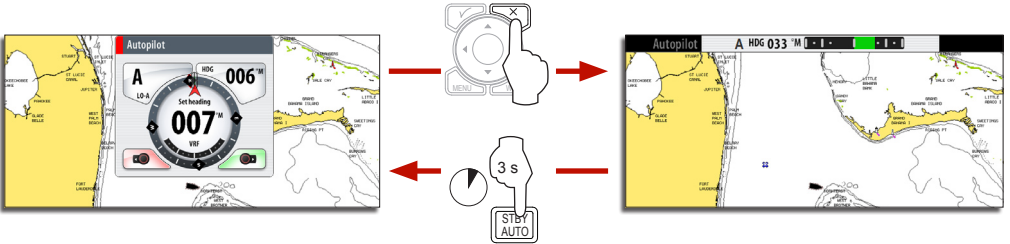
### Activating the Autopilot



## Selecting autopilot mode

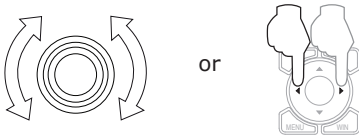


## Turning the Pilot pop-up ON/OFF



**NOTE:** The Pilot pop-up must be ON to operate the autopilot.

## Changing course in Auto mode

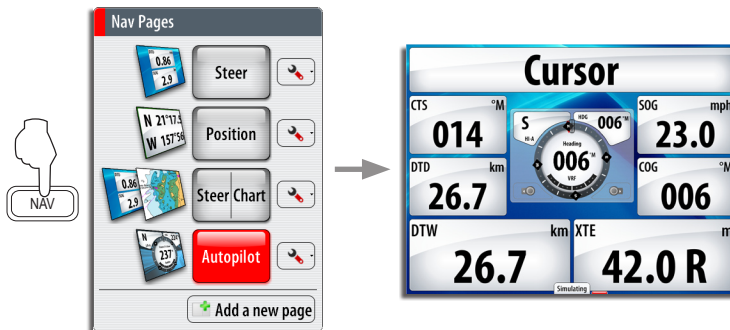


## Returning to Standby mode and manual steering



A short press on the **STBY/AUTO** key switches the system to Standby mode.  
Use left/right cursor keys for power steering with Pilot pop-up active.

## The Autopilot panel

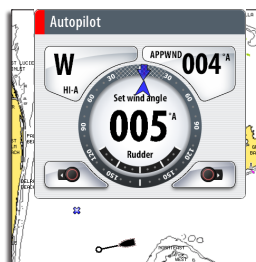
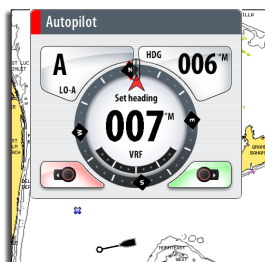


**NOTE:**  
The rotary knob must be pressed to change course from the Autopilot panel!

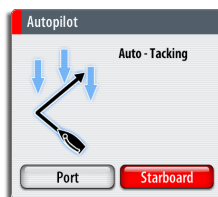
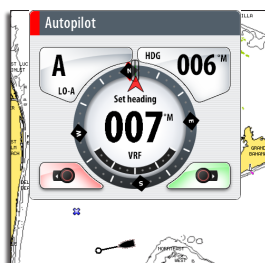
## ► Sailing with autopilot

### *Maintaining a fixed wind angle*

Before initiating Wind steering adjust the boat heading until wind is according to selected wind angle.

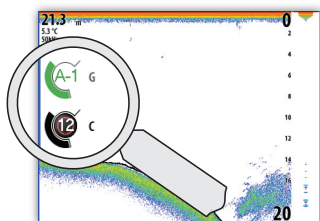


### *Tacking*

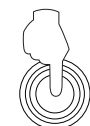


## ► Using the Echosounder

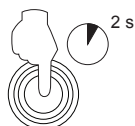
### *Adjusting sounder image*



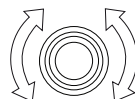
### *Select*



### *Auto/Manual*



### *Adjust*

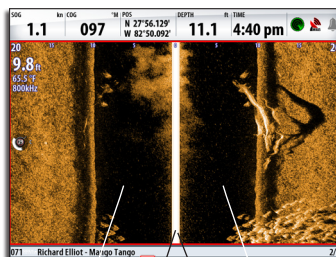
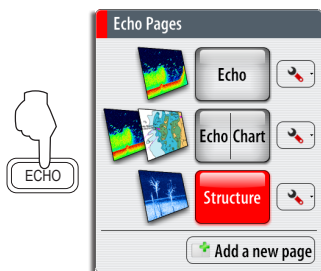


Auto - Manual

## ► The StructureScan panel

*NOTE: Only available when StructureScan is detected on the network.*

### Open a StructureScan page

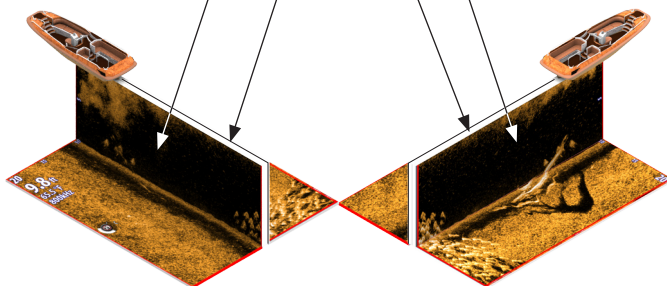
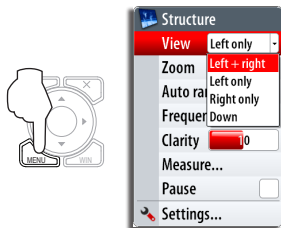


Left water column

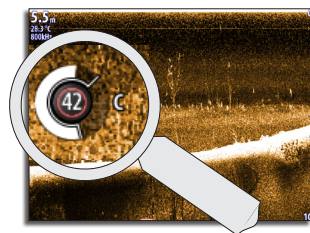
Right water column

Surface

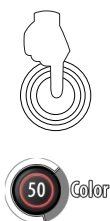
### Selecting views



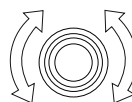
### Adjusting color intensity



### Activate



### Adjust



User manual available on:

 [simrad-yachting.com](http://simrad-yachting.com)

\* 9 8 8 - 1 0 0 2 2 - 0 0 1 \*